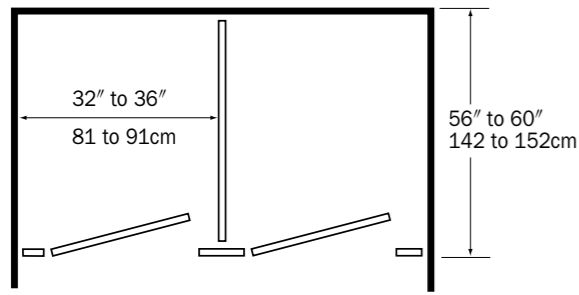
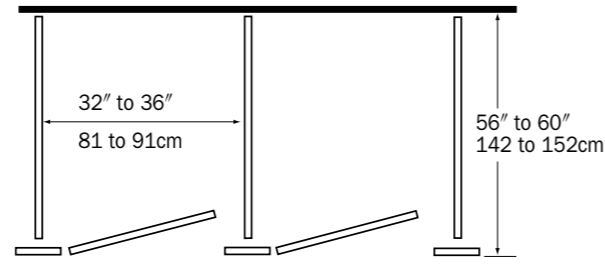


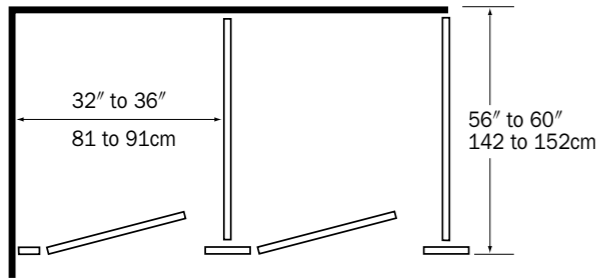
## Typical Layouts



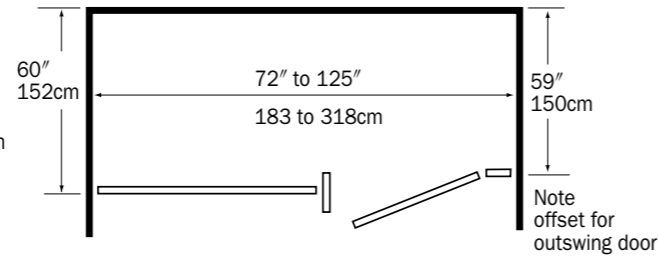
RECESSED



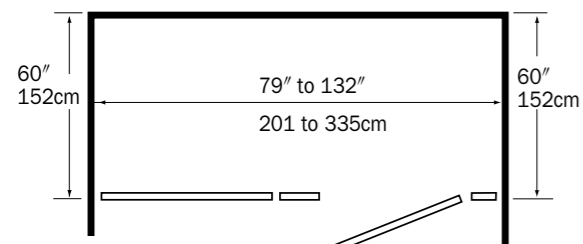
FREE STANDING



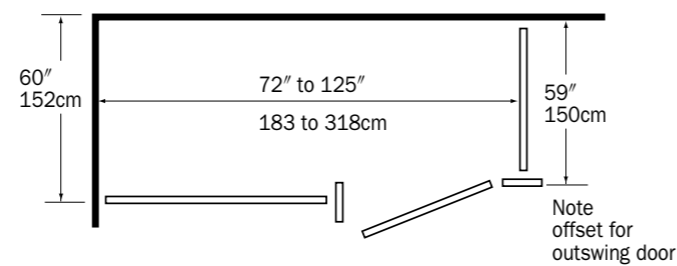
CORNER



ALCOVE CLOSED  
Floor Anchored



ALCOVE CLOSED  
Overhead Braced



ALCOVE OPEN  
Floor Anchored

## Toilet Partitions



[www.bobrick.com](http://www.bobrick.com)

## Bobrick Washroom Equipment

### COUNTRY

Australia  
France  
Germany  
United Kingdom  
Other Countries

### TEL. No.

1800-353158  
00800-33-66-99-99  
00800-33-66-99-99  
+44 (0)20 8366 1771  
+1 (818) 764-1000

### FAX No.

1800-221926  
00800-22-33-44-44  
00800-22-33-44-44  
+44 (0)20 8363 5794  
+1 (818) 503-9941

### Email

international@bobrick.com  
intlsales@bobrick.com  
intlsales@bobrick.com  
uksales@bobrick.com  
international@bobrick.com

LOCAL BOBRICK REPRESENTATIVE/DISTRIBUTOR



**Bobrick Washroom Equipment**

# 1080/1180 DuraLine™ Series Solid Phenolic Toilet Partitions



- Durable, Ultra-Hard Surfaces**  
**Stout, Solid-Core Construction**  
**Heavy-Duty Concealed Stainless Steel Hardware**  
**DuraLine™ Series Provides Protection Against:**
- Hose-down maintenance.**
  - Dents and impacts in vandal-prone heavy-use washrooms.**
  - Corrosion and structural failure.**
  - Peeling and delamination.**
  - Gouging, carving, and scratching.**

Specify for washrooms where architectural design and maximum durability are desired, from class A corporate office buildings to schools, stadiums and theme parks. 15-year limited warranty against breakage, corrosion and delamination. For product warranties and limitations information, see page 7.

**BEAUTIFUL INSTALLATION**  
 Concealed hardware provides crisp, clean flush architectural appearance.

## Standard Features



### MATERIAL

Doors and stiles: 3/4" (19mm) thick. Panels: 1/2" (13mm) thick. Solid phenolic core with multiple resin-impregnated kraft, color and clear Melamine surface sheets fused at high temperature and pressure. Black edges provide design detail.



### CONCEALED HARDWARE

Heavy-duty, type 304 satin-finish stainless steel; for emergency access, door lifts from outside. Hinge can be adjusted for a partial opening or self-closing door; patented, one-piece shoe conceals stile leveling device.

## Optional Features



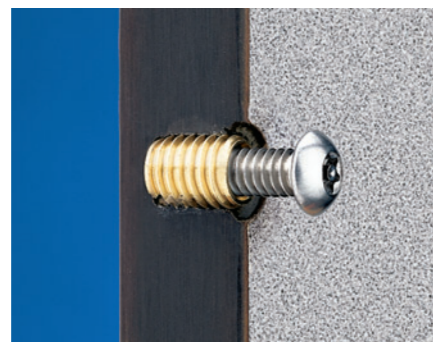
### .67 OPTION INSTITUTIONAL HARDWARE

All configurations. Extra-heavy-duty, type 304 satin-finish stainless steel; angle brackets, U-channels and spring loaded, self-closing hinge run full height of panels and doors; for emergency access, door lifts from outside. Doorstops are vandal-resistant. Coat hooks are not furnished, available as optional accessory. All fasteners are Pin-in-Head Torx Screws; patented, one-piece shoe conceals stile leveling device. To specify, add .67 suffix to Series Number.



### STILE BASE, LEVELING DEVICE

7-gauge, 3/16" (5mm) thick, corrosion-resistant steel, angle leveling bar is factory installed to base of solid phenolic stile.



### THREADED INSERTS

Threaded inserts are factory installed for securing hinges. Vandal-resistant, Pin-in-Head Torx Screws for all hardware; saves installation time and costs.



### OCCUPANCY INDICATOR DOOR LATCH

Through-the-door stainless steel construction with red-green occupancy indicator, and emergency access feature. Available on special order.

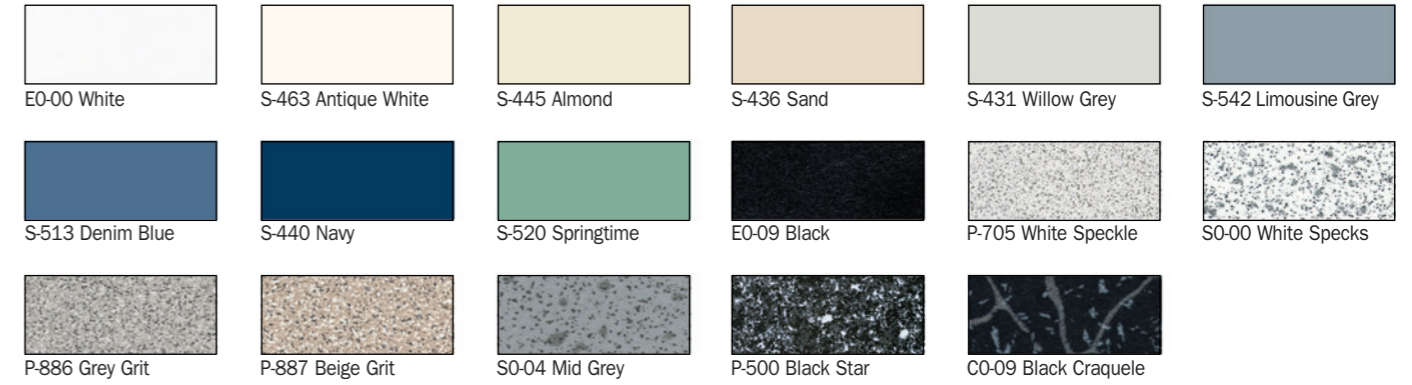
## 1080 AND 1180 DURALINE™ SERIES PRODUCT SELECTOR CHART

Configuration	Standard Series	Optional Feature Institutional Hardware
Floor-Anchored	1081/1181	1081.67/1181.67
Overhead-Braced	1082/1182	1082.67/1182.67
Floor-to-Ceiling	1086/1186	1086.67/1186.67
Ceiling-Hung	1088/1188	1088.67/1188.67



## Standard Solid Phenolic Colors, 1080, 1180 Series

Arborite® and Trespa® color numbers



## Standard Plastic Laminate Colors, 1540, 1040, 1030 Series

All Wilsonart® color numbers



Arborite is a registered trademark of Arborite, Division of ITW Canada. Trespa is a registered trademark of Trespa International BV. Wilsonart is a registered trademark of Wilsonart International.

**IMPORTANT NOTE:** Colors are printed reproductions and are for descriptive purposes only. Refer to samples for absolute color fidelity. Bobrick Color Guides and samples are available on request. Additional colors are available and may be subject to extra charges and longer lead times.

### Product Warranties

The following Bobrick toilet partition panels, doors and stiles are warranted against breakage, corrosion, delamination and defects in workmanship from the date of purchase for the periods set forth below (this limited warranty is conditioned on the toilet partitions being properly installed, used and serviced):

Toilet Partitions	Limited Warranty
DuraLine™ Series, 1080/1180	15 years
Toilet Partition Series not otherwise listed (i.e., TrimLine™, Designer™, Classic™ Series)	1 year

Hardware for all Bobrick toilet partition Series is warranted to be free from defects in workmanship and material under normal usage and service for one year from the date of purchase. (Rust and discoloration to stainless steel parts resulting from exposure to harsh environmental and/or chemical conditions are not considered to be defects in workmanship or material and there is no express or implied warranty provided for such condition. Refer to Bobrick Advisory Bulletin TB-21, Effective Ways to Clean Stainless Steel.)

### Limitations on Warranties

In all instances, the purchaser's exclusive remedy against Bobrick is for the repair or replacement, at Bobrick's option, of warranted defective products or parts. Bobrick will also bear the cost of the purchaser's return of defective products or parts to Bobrick. Bobrick's warranties set forth above do not cover damage resulting from vandalism. No other remedy (including, but not limited to, damages for field labor charges, lost profits, lost sales, injury to persons or property or any other incidental or consequential losses) is available.

Bobrick products are protected under one or more of the following Patent Numbers. **Canada:** 2196729; **United States:** 6443411, 5660011.

Illustrations and descriptions herein are applicable to production as of the date of this catalog. The manufacturer reserves the right and does from time to time make changes and improvements in designs and dimensions. Catalog No. ITPE05, 8M. March 1, 2005. © 2005, Bobrick Washroom Equipment, Inc. Printed in USA.

## Shower Dividers, Dressing Compartments, And Urinal Screens



**1082 SERIES OVERHEAD-BRACED SHOWER DIVIDERS** with shower curtain track and hooks in headrail.

**1045 SERIES WALL-HUNG URINAL SCREENS**

**1041 SERIES FLOOR-ANCHORED URINAL SCREENS**

**1083 SERIES POST-TO-CEILING URINAL SCREENS**

For design-integration, coordinate urinal, entrance screens, shower dividers and dressing compartments with toilet partitions. Select solid phenolic 1080/1180 DuraLine™ Series shower dividers and dressing compartments for wet-areas.

Overhead-braced configuration can be furnished with shower curtains, curtain track and hooks concealed in headrail. Optional benches with stainless steel support brackets are available.

### SHOWER DIVIDERS, DRESSING COMPARTMENTS, AND URINAL SCREENS SELECTOR CHART

Series	Shower Dividers Overhead-Braced	Dressing Compartments Overhead-Braced	Floor-Anchored	Urinal Screen Configurations Post-to-Ceiling	Wall-Hung	Ceiling-Hung
DuraLine™ Series	1082/ 1182	1082/ 1182	1081/ 1181	1083/ 1183	1085/ 1185	1088/ 1188
Classic™ Series	NR	1542	1541	N/A	1545	1548
Designer™ Series	NR	1042	1041	1043	1045	1048
TrimLine™ Series	NR	1032	1031	1033	1035	1038

NR: Not recommended for wet areas.  
N/A: Not available.

## Series Numbers, Components and Sizes

### TOILET PARTITIONS

WIDTH	STILES		DOORS		PANELS		BENCHES	
	WIDTH	HEIGHT	INSWING WIDTH	OUTSWING WIDTH	WIDTH	HEIGHT	WIDTH	DEPTH
3" (8cm)	Floor	69" (175cm)						
4" (10cm)	Anchored		22" (56cm)	25" (64cm)	Up to 84" (213cm)	58" (147cm)	18" (46cm)	10" (25cm)
5" (13cm)			58" (147cm)	to †72" (183cm)				
6" (15cm)			37" (94cm)	37" (94cm)				
8" (20cm)								
10" (25cm)	Overhead Braced	83" (211cm)					24" (61cm)	
12" (30cm)								
16" (41cm)								
20" (51cm)								
24" (61cm)								

### URINAL SCREEN COMPONENTS

WIDTH	PANELS		WIDTH	HEIGHT
	WIDTH	HEIGHT		
6" (15cm) (Stile)	Floor Anchored	69" (175cm)	Up to 60" (152cm)	58" (147cm) to †72" (183cm)
1 3/4" (3cm) (Post)	Post to Ceiling	10' (305cm)		
N/A	Wall Hung		Up to 24" (61cm)	42" (107cm)

### MATERIAL THICKNESS

SERIES	STILES	DOORS	PANELS	BENCHES
1080	3/4" (19cm)	3/4" (19cm)	1/2" (13cm)	1/2" (13mm)
1540	1" (25cm)	1" (25cm)	1" (25cm)	1" (25mm)
1040	1" (25cm)	1" (25cm)	1" (25cm)	1" (25mm)
1030	1" (25cm)	1" (25cm)	1" (25cm)	N/A

†Height measurement for Maximum Privacy Compartments in all configurations.

## 1540 Classic™ Series Budget-Priced Toilet Partitions



**MOST POPULAR INSTALLATION**  
Overhead-Braced configuration provides strength for moderate-use installations.

**Durable Plastic Laminate Surfaces**  
**Industrial Grade Particle Board**  
**Alternative to dent, scratch and corrosion-prone hollow-core metal partitions**

### Classic™ Series Engineering Resists:

**Dents and impacts in moderate-use commercial, institutional and industrial washrooms.**

**Scratching and gouging.**

**Paint and marker ink. Graffiti cleans without ghosting.**

**Corrosion and structural failure.**

**Class B flame spread and smoke development.**

**Emergency access door keeper.**

**35 standard colors, see page 7.**

Specify for commercial, institutional and industrial building washrooms where there is a minimum of vandalism, and where budget pricing is a consideration.

### Standard Features



#### MATERIAL

Doors, stiles and panels: 1" (25mm) finished thickness, 3-ply, 45-lb density, resin impregnated, impact-resistant particle board construction; scratch-, graffiti- and corrosion resistant plastic laminate edges and surfaces.



#### HARDWARE

Through-bolted hinges, door latches, door keepers, coat hooks, and mounting hardware constructed of bright-polished chrome-plated Zamak. For emergency access, door lifts from the outside; patented, one-piece, satin-finish stainless steel shoe conceals stile leveling device.

### Optional Features



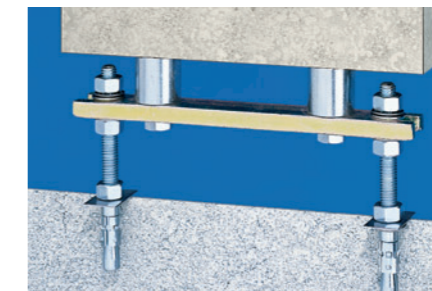
#### .63 OPTION STILE BASE WITH WELDED-STEEL CORE LEVELING DEVICE

All configurations. 11-gauge steel core, welded to 3/8" x 7/8" (10 x 22mm) steel bar forming a single structural unit; furnished 3/8" (10mm) diameter, stainless steel wedge floor anchors. To specify, add .63 suffix to Series Number.



#### OVERHEAD-BRACED STILE BASE, LEVELING DEVICE

12-gauge, 3" x 1 1/4" (76 x 32mm) plated steel bracket attached to bottom of stile; furnished with leveling bolt, stainless steel shoe retainer, floor "L" bracket, screws and plastic anchors.



#### FLOOR-ANCHORED STILE BASE, LEVELING DEVICE

3/8" x 1" (10 x 25mm) steel bar, zinc-chrome plated, bolted to stile; furnished 3/8" (10mm) diameter stainless steel wedge floor anchors.



#### .64 OPTION STAINLESS STEEL HARDWARE

All configurations. Heavy-duty, type 304 satin-finish stainless steel; cast, through-bolted mortised hinges and clothes hook; emergency access door keeper; concealed stile and panel mounting brackets; patented, one-piece, shoe conceals leveling device. To specify, add .64 suffix to Series Number.

### 1540 CLASSIC™ SERIES PRODUCT SELECTOR CHART

Configuration	Standard Series	Optional Features		
		Stile Base with Welded Steel Core	Stainless Steel Hardware	Stile Base with Welded Steel Core and Stainless Steel Hardware
Floor-Anchored	1541	1541.63	1541.64	1541.63/.64
Overhead-Braced	1542	1542.63	1542.64	1542.63/.64
Ceiling-Hung	1548	1548.63	1548.64	1548.63/.64

### DESIGNER'S NOTES:

Classic™ Series toilet partitions are not designed for high-traffic or vandal-prone environments. DuraLine™ Series vandal-resistant partitions are recommended for washrooms subject to heavy use and abuse.



#### OCCUPANCY INDICATOR DOOR LATCH

Through-the-door stainless steel construction with red-green occupancy indicator, and emergency access feature. Available on special order.

# 1040 Designer™ Series Plastic Partitions - Laminate Edges 1030 TrimLine™ Series Plastic Laminate Partitions - Stainless Steel Edges



**Steel-Core Reinforced Stiles**  
**Durable Plastic Laminate Surfaces**  
**Industrial Grade Particle Board**  
**Concealed Heavy-Duty Hardware**  
**Designer™ Series Delivers Strength Against:**  
**Dents and impacts in heavy-traffic retail, foodservice and industrial washrooms.**  
**Scratching and gouging.**  
**Paint and marker ink. Graffiti cleans without ghosting.**  
**Corrosion and structural failure.**

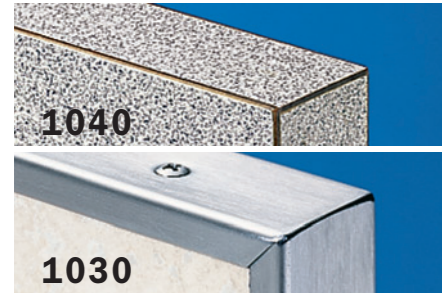
**Class B flame spread and smoke development.**  
**Emergency access door keeper.**  
**35 standard colors, see page 7.**

**1040:** Select for commercial, institutional and industrial washrooms where design plus durability are desired. **1030:** Install in vandal-prone institutional, retail and foodservice washrooms.

## EASY MAINTENANCE INSTALLATION

Ceiling-hung configuration facilitates compartment floor cleaning access.

## Standard Features



### MATERIAL

Doors, stiles and panels: 1" (25mm) finished thickness, 3-ply, 45-lb density resin impregnated particle board construction. **1040:** .050" (1mm) thick plastic laminate edges and surfaces. **1030:** .050" (1mm) thick, plastic laminate edges and surfaces; laminate routed for flush fit stainless steel edge.



### STILE BASE, LEVELING DEVICE

11-gauge steel core welded to 3/8" x 1/8" (10 x 22mm) steel leveling bar, forming a single structural unit. Furnished 3/8" (10mm) diameter, stainless steel wedge floor anchors require minimum 2" (51mm) penetration into minimum 3" (76mm) thick structural concrete floor.

### 1040 DESIGNER™ SERIES PRODUCT SELECTOR CHART

Configuration	Standard Series	Optional Feature Full-Height Hardware
Floor-Anchored	1041	1041.65
Overhead-Braced	1042	1042.65
Ceiling-Hung	1048	1048.65



### CONCEALED HARDWARE

Heavy-duty, type 304 satin-finish stainless steel; for emergency access, door lifts from outside. Hinge can be adjusted for a partial opening or self-closing door; patented, one-piece shoe conceals stile leveling device.



### THREADED INSERTS

### T-NUTS

Threaded inserts are factory installed for securing hinges. Vandal-resistant, Pin-in-Head Torx Screws for mounting all hardware; saves installation time and expense. T-nuts are factory installed for securing door latch.

## Optional Features



### .65 OPTION FULL-HEIGHT HARDWARE

All configurations. Extra-heavy-duty, type 304 satin-finish stainless steel; angle brackets, U-channels and spring loaded, self-closing hinge run full height of panels and doors; for emergency access, door lifts from outside; all fasteners are Pin-in-Head Torx Screws; patented, one-piece, shoe conceals stile leveling device. To specify, add .65 suffix to Series Number.



### OCCUPANCY INDICATOR DOOR LATCH

Through-the-door stainless steel construction with red-green occupancy indicator, and emergency access feature. Available on special order.

### 1030 TRIMLINE™ SERIES PRODUCT SELECTOR CHART

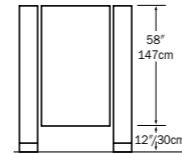
Configuration	Standard Series	Optional Feature Full-Height Hardware
Floor-Anchored	1031	1031.65
Overhead-Braced	1032	1032.65
Ceiling-Hung	1038	1038.65

## Configurations Responsive To All Installation Criteria



### FLOOR ANCHORED

Recommended for high ceiling washrooms, provides a clean line across top of partitions. Furnished with anchors that require minimum 2" (51mm) penetration into 3" (76mm) thick structural concrete floor. (1041 Floor-Anchored Designer Series shown.)



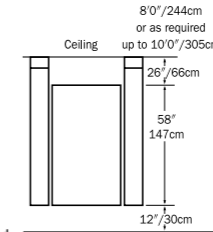
DESCRIPTION	SERIES NO.
Stainless Steel Edge	1031
Laminated Plastic Edge	1541, 1041
Solid Phenolic	1081

Series: 1081, 1181, 1541, 1041, 1031.



### CEILING-HUNG

Provides a clean, open design and easy floor access for maintenance cost savings. Attaches to structural ceiling support furnished by others.



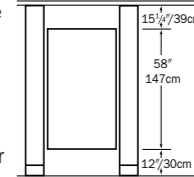
DESCRIPTION	SERIES NO.
Stainless Steel Edge	1038
Laminated Plastic Edge	1548, 1048
Solid Phenolic	1088

Series: 1088, 1188, 1548, 1048, 1038.



### OVERHEAD BRACED

Recommended for installations where there are lightweight concrete floors, structural concrete floors less than 3" (76mm) thick or plywood floors. Overhead bracing provides additional rigidity. Furnished with anchors that require minimum 2" (51mm) penetration into 3" (76mm) thick structural concrete floor. (1082 Overhead-Braced DuraLine Series pictured.)



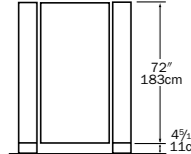
DESCRIPTION	SERIES NO.
Stainless Steel Edge	1032
Laminated Plastic Edge	1542, 1042
Solid Phenolic	1082

Series: 1082, 1182, 1542, 1042, 1032.



### MAXIMUM PRIVACY

Compartments with 72" (183cm) high panels and doors and minimum 4 5/16" (11cm) floor clearance available in all installation configurations. (2031 Maximum Privacy, Floor-Anchored TrimLine Series pictured.)



DESCRIPTION	SERIES NO.
Stainless Steel Edge	2030
Laminated Plastic Edge	2040
Solid Phenolic	2080

To specify Maximum Privacy compartments, select desired Bobrick Series. Then add corresponding suffix to series number to specify desired mounting configuration: "1" for Floor Anchored or "2" for Overhead Braced. Example: To designate Maximum Privacy, Overhead Braced, Designer Series laminated plastic edged compartments, specify Bobrick 2042 Series.

### IMPORTANT NOTE

Maximum Privacy Series

In most instances when a single piece of panel is needed in our Maximum Privacy Series the depth of the compartment cannot exceed 60" (1524mm). For panels exceeding 60" (1524mm) in both width and height the following will be supplied.

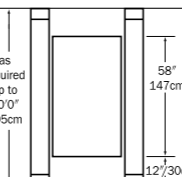
Solid Phenolic: An "H" Channel is needed between 2 panels. This will be mounted horizontally.

Plastic Laminate: Splicing of the particle board and seaming of the plastic laminate.



### FLOOR-TO-CEILING ANCHORED

Specify for maximum support and vandal-resistance in high-usage washrooms. Requires 3" (76mm) thick structural concrete floor, and structural ceiling support furnished by others. Series: 1086, 1186.



### BARRIER-FREE

Recommended for barrier-free access code compliance. Layouts available from Bobrick for Classic, Designer, TrimLine, and DuraLine Series Floor Anchored and Overhead Braced installation with either front or side entry. Furnished with black vinyl-coated aluminum handle and an international handicap symbol. (1041 Barrier-Free Floor-Anchored Designer Series pictured.)

